



CAG369Hu22
Anti-ATPase, Na⁺/K⁺ Transporting Alpha 1 Polypeptide (ATP1a1)
Monoclonal Antibody
Organism Species: *Homo sapiens* (Human)
Instruction manual

FOR RESEARCH USE ONLY
NOT FOR USE IN CLINICAL DIAGNOSTIC PROCEDURES

13th Edition (Revised in Aug, 2023)

[PROPERTIES]

Source: Monoclonal antibody preparation

Host: Mouse

Purification: Protein A/G Affinity Chromatography.

Clone number: C2

Traits: Liquid

Concentration: 1mg/mL

UOM: 100µl

Applications: Loading Control of WB.

[IMMUNOGEN]

Immunogen: Recombinant ATP1a1 (His493~Ala660) expressed in *E.coli*.

Accession No.: RPG369Hu01

[ORGANISM SPECIES MORE]

React with: Human, mouse, rat, canine, simian, porcine, rabbit;

Other species have not been detected.

[APPLICATIONS]

Western blotting: 1:500-1000

Optimal working dilutions must be determined by end user.

[FORMULATION]

Form & Buffer: Supplied as solution form in 0.01M PBS, pH7.4, containing 0.02% NaN₃, 50% glycerol.

[STORAGE AND STABILITY]

Storage: Avoid repeated freeze/thaw cycles.

Store at 4°C for frequent use.

Aliquot and store at -20°C for 24 months.

Stability Test: The thermal stability is described by the loss rate. The loss rate was determined by accelerated thermal degradation test, that is, incubate the

protein at 37°C for 48h, and no obvious degradation and precipitation were observed. The loss rate is less than 5% within the expiration date under appropriate storage condition.

[IDENTIFICATION]

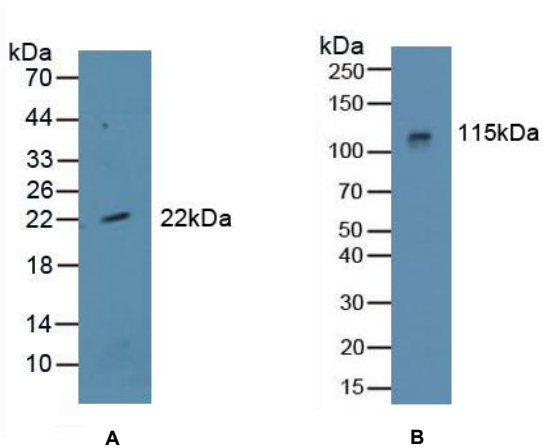


Figure 1. Western Blot

A. Sample: Recombinant ATP1a1, Human

B. Human 293T Cells

**Primary Ab: 1:800 Dilution of Mouse Anti-Human
ATP1a1 Ab**

**Second Ab: 1:5000 Dilution of HRP-Linked Rabbit
Anti-Mouse IgG Ab (Catalog: SAA544Mu09)**

[Important Note]

The kit is designed for in vitro and research use only, we will not be responsible for any issue if the kit was used in clinical diagnostic or any other procedures.

