



CAB171Hu22

Anti-Transferrin Receptor (TFR) Monoclonal Antibody

Organism Species: *Homo sapiens* (Human)

Instruction manual

FOR RESEARCH USE ONLY

NOT FOR USE IN CLINICAL DIAGNOSTIC PROCEDURES

13th Edition (Revised in Aug, 2023)

[PROPERTIES]

Source: Monoclonal antibody preparation

Host: Mouse

Purification: Protein A/G Affinity Chromatography.

Traits: Liquid

Concentration: 1mg/mL

UOM: 100µl

Applications: Loading Control of WB.

[IMMUNOGEN]

Immunogen: Recombinant TFR (Gly567~Gly744) expressed in *E.coli*.

Accession No.: RPB171Hu01

[ORGANISM SPECIES MORE]

React with: Human, mouse;

Other species have not been detected.

[APPLICATIONS]

Western blotting: 1:200-2000

Optimal working dilutions must be determined by end user.

[FORMULATION]

Form & Buffer: Supplied as solution form in 0.01M PBS, pH7.4, containing 0.02% NaN₃, 50% glycerol.

[STORAGE AND STABILITY]

Storage: Avoid repeated freeze/thaw cycles.

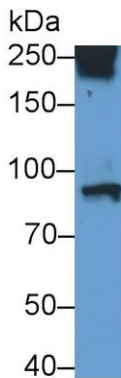
Store at 4°C for frequent use.

Aliquot and store at -20°C for 24 months.

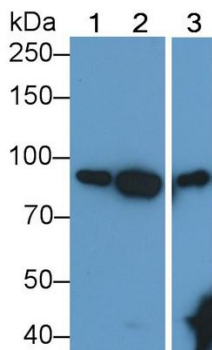
Stability Test: The thermal stability is described by the loss rate. The loss rate was determined by accelerated thermal degradation test, that is, incubate the protein at 37°C for 48h, and no obvious degradation and precipitation were

observed. The loss rate is less than 5% within the expiration date under appropriate storage condition.

[IDENTIFICATION]



Western Blot; Sample: Human Placenta lysate Primary
Ab: 0.4 μ g/ml Mouse Anti-Human TFR Antibody
Second Ab: 0.2 μ g/mL HRP-Linked Caprine
Anti-Mouse IgG Polyclonal Antibody
(Catalog: SAA544Mu19)



Western Blot; Sample: Lane1: Hela cell lysate;
Lane2: MCF7 cell lysate; Lane3: K562 cell lysate
Primary Ab: 0.4 μ g/ml Mouse Anti-Human TFR
Antibody
Second Ab: 0.2 μ g/mL HRP-Linked Caprine
Anti-Mouse IgG Polyclonal Antibody
(Catalog: SAA544Mu19)



[Important Note]

The kit is designed for in vitro and research use only, we will not be responsible for any issue if the kit was used in clinical diagnostic or any other procedures.

