



CAB839Hu22

Anti-Vinculin (VCL) Monoclonal Antibody

Organism Species: Homo sapiens (Human)

Instruction manual

FOR IN VITRO USE AND RESEARCH USE ONLY
NOT FOR USE IN CLINICAL DIAGNOSTIC PROCEDURES

12th Edition (Revised in Aug, 2016)

[PROPERTIES]

Source: Monoclonal antibody preparation

Host: Mouse

Purification: Protein A/G Affinity Chromatography.

Traits: Liquid

Concentration: 500µg/mL

UOM: 100µg

Applications: Loading Control of WB.

[IMMUNOGEN]

Immunogen: Recombinant VCL (Lys1020~Gln1134) expressed in *E.coli*.

Accession No.: RPB839Hu01

[ORGANISM SPECIES MORE]

React with: Human, mouse, rat;

Other species have not been detected.

[APPLICATIONS]

Western blotting: 0.5-5µg/mL

Optimal working dilutions must be determined by end user.

[FORMULATION]

Form & Buffer: Supplied as solution form in 0.01M PBS, pH7.4, containing 0.05% Proclin-300, 50% glycerol.

[STORAGE AND STABILITY]

Storage: Avoid repeated freeze/thaw cycles.

Store at 4°C for frequent use.

Aliquot and store at -20°C for 12 months.

Stability Test: The thermal stability is described by the loss rate. The loss rate was determined by accelerated thermal degradation test, that is, incubate the protein at 37°C for 48h, and no obvious degradation and precipitation were

observed. The loss rate is less than 5% within the expiration date under appropriate storage condition.

[IDENTIFICATION]

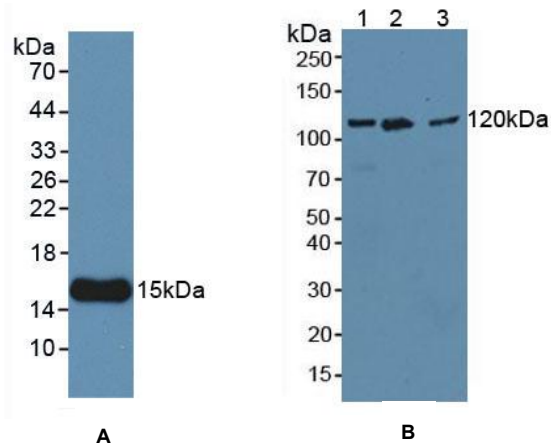


Figure 1. Western Blot

A. Sample: Recombinant VCL, Human

B. Lane1: Human Lung Tissue

Lane2: Rat Heart Tissue

Lane3: Porcine Heart Tissue

Primary Ab: 3 μ g/mL Mouse Anti-Human VCL Ab

Second Ab: 1:5000 Dilution of HRP-Linked Rabbit

Anti-Mouse IgG Ab (Catalog: SAA544Mu09)