

EPA363Hu61 100µg

Eukaryotic Platelet/Endothelial Cell Adhesion Molecule (PECAM1)

Organism Species: *Homo sapiens (Human)*

Instruction manual

FOR RESEARCH USE ONLY

NOT FOR USE IN CLINICAL DIAGNOSTIC PROCEDURES

12th Edition (Revised in Aug, 2016)

[PROPERTIES]

Source: Eukaryotic expression

Host: 293F cell

Residues: Gln28~Lys601

Tags: N-terminal His Tag

Subcellular Location: Membrane

Purity: > 95%

Traits: Freeze-dried powder

Buffer formulation: 20mM Tris, 150mM NaCl, pH8.0, containing 0.01% SKL, 5% Trehalose.

Original Concentration: 200µg/mL

Applications: Positive Control; Immunogen; SDS-PAGE; WB.

(May be suitable for use in other assays to be determined by the end user.)

Predicted isoelectric point: 7.1

Predicted Molecular Mass: 65.6kDa

Accurate Molecular Mass: 90kDa as determined by SDS-PAGE reducing conditions.

Phenomenon explanation:

The possible reasons that the actual band size differs from the predicted are as follows:

1. Splice variants: Alternative splicing may create different sized proteins from the same gene.
2. Relative charge: The composition of amino acids may affect the charge of the protein.
3. Post-translational modification: Phosphorylation, glycosylation, methylation etc.
4. Post-translation cleavage: Many proteins are synthesized as pro-proteins, and then cleaved to give the active form.
5. Polymerization of the target protein: Dimerization, multimerization etc.

[USAGE]

Reconstitute in 20mM Tris, 150mM NaCl (pH8.0) to a concentration of 0.1-1.0 mg/mL. Do not vortex.

[STORAGE AND STABILITY]

Storage: Avoid repeated freeze/thaw cycles.

Store at 2-8°C for one month.

Aliquot and store at -80°C for 12 months.

Stability Test: The thermal stability is described by the loss rate. The loss rate was determined by accelerated thermal degradation test, that is, incubate the protein at 37°C for 48h, and no obvious degradation and precipitation were observed. The loss rate is less than 5% within the expiration date under appropriate storage condition.

[SEQUENCE]

```

                                QEN SFTINSVDMK SLPDWTVQNG
KNLTLQCFAD VSTTSHVKPQ HQMLFYKDDV LFYNISSMKS TESYFIPEVR
IYDSGTYKCT VIVNNKEKTT AEYQVLVEGV PSPRVTLDDK EAIQGGIVRV
NCSVPEEKAP IHFTIEKLEL NEKMVKLKRE KNSRDQNFVI LEFPVEEQDR
VLSFRCQARI ISGIHMQTSE STKSELVTVT ESFSTPKFHI SPTGMIMEGA
QLHIKCTIQV THLAQEFPEI IIQKDKAIVA HNRHGKAVY SVMAMVEHSG
NYTCKVESSR ISKVSSIVVN ITELFSKPEL ESSFTHLDQG ERLNLSCSIP
GAPPANFTIQ KEDTIVSQTQ DFTKIASKSD SGTYICTAGI DKVVKKSNTV
QIVVCEMLSQ PRISYDAQFE VIKGQTIEVR CESISGTLPI SYQLLKTSKV
LENSTKNSND PAVFKDNPTD DVEYQCVADN CHSHAKMLSE VLRVKVIAPV
DEVQISILSS KVVESGEDIV LQCAVNEGSG PITYKFYREK EGKPFYQMTS
NATQAFWTKQ KASKEQEGEY YCTAFNRANH ASSVPRSKIL TVRVILAPWK
K

```

[IDENTIFICATION]

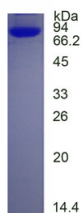


Figure. SDS-PAGE

[IMPORTANT NOTE]

The kit is designed for research use only, we will not be responsible for any issue if the kit was used in clinical diagnostic or any other procedures.