

EPA889Hu61 100µg

Eukaryotic Renin (REN)

Organism Species: *Homo sapiens (Human)*

Instruction manual

FOR RESEARCH USE ONLY

NOT FOR USE IN CLINICAL DIAGNOSTIC PROCEDURES

12th Edition (Revised in Aug, 2016)

[PROPERTIES]

Source: Eukaryotic expression

Host: CHO Cell

Residues: Pro25~Arg406

Tags: N-terminal His Tag

Subcellular Location: Secreted

Purity: > 97%

Traits: Freeze-dried powder

Buffer formulation: PBS, pH7.4, containing 0.01% SKL, 1mM DTT, 5% Trehalose and Proclin300.

Original Concentration: 200µg/mL

Applications: Positive Control; Immunogen; SDS-PAGE; WB.

(May be suitable for use in other assays to be determined by the end user.)

Predicted isoelectric point: 6.1

Predicted Molecular Mass: 43.9kDa

Accurate Molecular Mass: 44kDa as determined by SDS-PAGE reducing conditions.

[USAGE]

Reconstitute in 10mM PBS (pH7.4) to a concentration of 0.1-1.0 mg/mL. Do not vortex.

[STORAGE AND STABILITY]

Storage: Avoid repeated freeze/thaw cycles.

Store at 2-8°C for one month.

Aliquot and store at -80°C for 12 months.

Stability Test: The thermal stability is described by the loss rate. The loss rate was determined by accelerated thermal degradation test, that is, incubate the protein at 37°C for 48h, and no obvious degradation and precipitation were observed. The loss rate is less than 5% within the expiration date under appropriate storage condition.

[SEQUENCE]

```

PTDTTT FKRIFLKRMP SIRESLKERG
VDMARLGPEW SQPMKRLTLG NTTSSVILTN YMDTQYYGEI GIGTPPQTFK
VVFDTGSSNV WVPSSKCSRL YTACVYHKLF DASDSSSYKH NGTELTRYS
TGTVSGFLSQ DIITVGGITV TQMFGEVTEM PALPFMLAEF DGVVGMGFIE
QAIGRVPIF DNIISQGVLK EDVFSFYNNR DSENSQSLGG QIVLGGSDPQ
HYEGNFHYIN LIKTGVWQIQ MKGVSVGSST LLCEDGCLAL VDTGASYISG
STSSIEKLME ALGAKKRLFD YVVKNEGPT LPDISFHLGG KEYTLTSADY
VFQESYSSKK LCTLAIHAMD IPPPTGPTWA LGATFIRKFY TEFDRNNRI
GFALAR

```

[IDENTIFICATION]

```

TTGAGCGCCGCGCTTTAAGCGATCTCTCGAGCATCCCTCAATCCGAGACCCCTGAGCGACGAGCAGTGTGACATGCGCGCCCTGCGCTTCGCAACCGCCCTCCTCGTGTACTGCTGCAGCTGATGCGCCGTACTATGCGCGATTTGCGATCGCGCCGCGCCGCGCTTCAAGGAGTGTCT
PTDTTTFKRIFLKRWKSPSIRESLKERGVDMARLGPEWSQPMKRLTLGNTTSSSVILTNVMDTQYYGEIGIGTPPQTFK

```

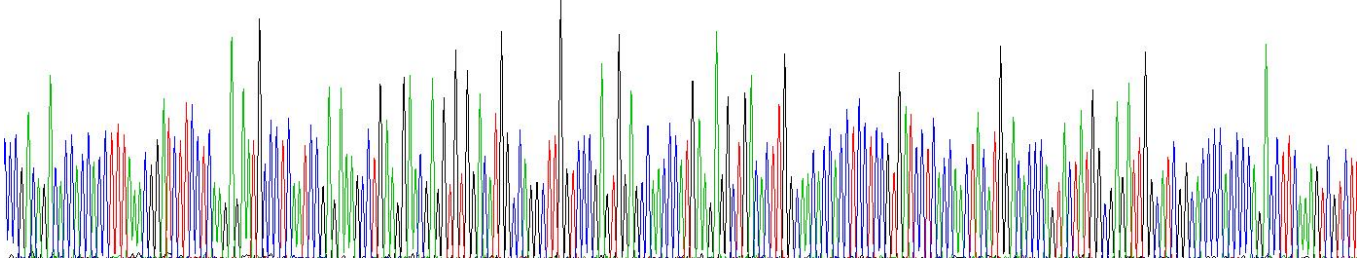


Figure. Gene Sequencing (Extract)



Figure. SDS-PAGE

[IMPORTANT NOTE]

The kit is designed for research use only, we will not be responsible for any issue if the kit was used in clinical diagnostic or any other procedures.