

MAB932Hu22

Monoclonal Antibody to Glyceraldehyde-3-Phosphate Dehydrogenase (GAPDH)

Organism Species: *Homo sapiens (Human)*

Instruction manual

FOR RESEARCH USE ONLY

NOT FOR USE IN CLINICAL DIAGNOSTIC PROCEDURES

13th Edition (Revised in Aug, 2023)

[PROPERTIES]

Source: Monoclonal antibody preparation

Host: Mouse

Antibody isotype: N/A

Purification: Protein A + Protein G affinity chromatography

Clone number: 3-2#

Traits: Liquid

Concentration: 1mg/ml

UOM: 100ul

Cross

Reactivity: Human;Mouse;Rat;Cavia;Rabbit;Porcine;Bovine;Caprine;Ovine;Equine;Gallus

Applications: Loading Control of WB; IHC; ICC.

[IMMUNOGEN]

Immunogen: Recombinant GAPDH (Gly2~Ser148) expressed in *E.coli*

Accession No.: RPB932Hu01

[APPLICATIONS]

Western blotting: 0.01-5µg/mL;

Immunohistochemistry: 5-30µg/mL;

Immunocytochemistry: 5-20µg/mL;

Optimal working dilutions must be determined by end user.

[FORMULATION]

Form & Buffer: Supplied as solution form in 0.01M PBS, pH7.4, containing 0.05% Proclin-300, 50% glycerol.

[STORAGE AND STABILITY]

Storage: Avoid repeated freeze/thaw cycles.

Store at 4°C for frequent use.

Aliquot and store at -20°C for 24 months.

Stability Test: The thermal stability is described by the loss rate. The loss rate was determined by accelerated thermal degradation test, that is, incubate the protein at 37°C for 48h, and no obvious degradation and precipitation were observed. The loss rate is less than 5% within the expiration date under appropriate storage condition.

[IDENTIFICATION]

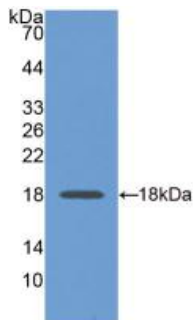
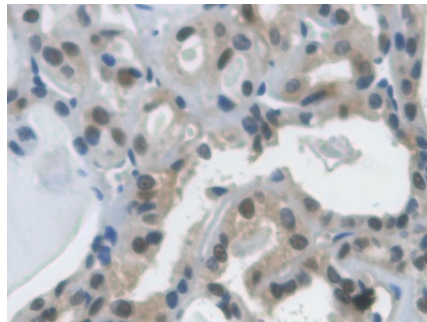
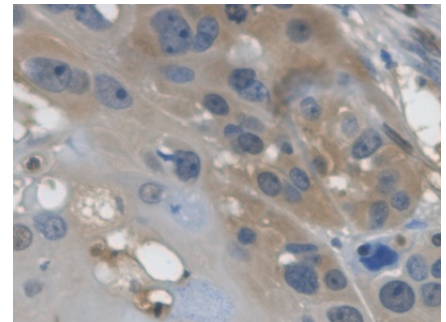


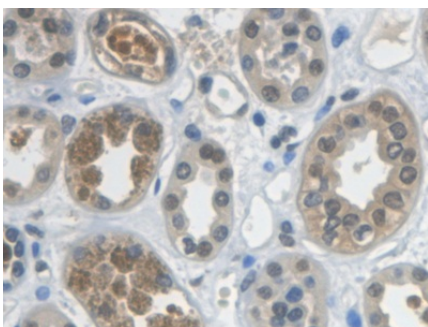
Figure. Western Blot; Sample: Recombinant GAPDH, Human.



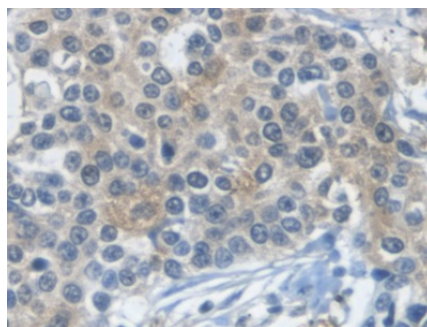
DAB staining on IHC-P;
 Samples: Human Thyroid cancer Tissue;
 Primary Ab: 30µg/ml Mouse Anti-Human GAPDH Antibody
 Second Ab: 2µg/mL HRP-Linked Caprine Anti-Mouse IgG Polyclonal Antibody
 (Catalog: SAA544Mu19)



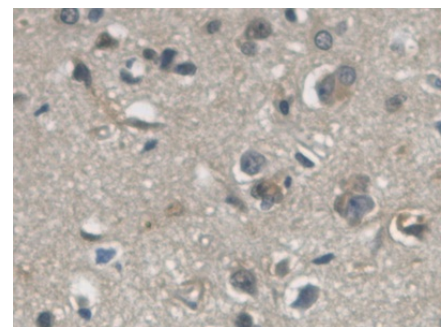
DAB staining on IHC-P;
 Samples: Human Esophagus Tissue;
 Primary Ab: 30µg/ml Mouse Anti-Human GAPDH Antibody
 Second Ab: 2µg/mL HRP-Linked Caprine Anti-Mouse IgG Polyclonal Antibody
 (Catalog: SAA544Mu19)



DAB staining on IHC-P;
 Samples: Human Kidney Tissue;
 Primary Ab: 30µg/ml Mouse Anti-Human GAPDH Antibody
 Second Ab: 2µg/mL HRP-Linked Caprine Anti-Mouse IgG Polyclonal

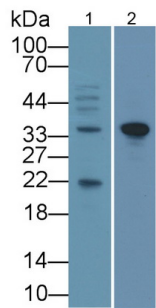


DAB staining on IHC-P;
 Samples: Human Prostate cancer Tissue;
 Primary Ab: 30µg/ml Mouse Anti-Human GAPDH Antibody
 Second Ab: 2µg/mL HRP-Linked



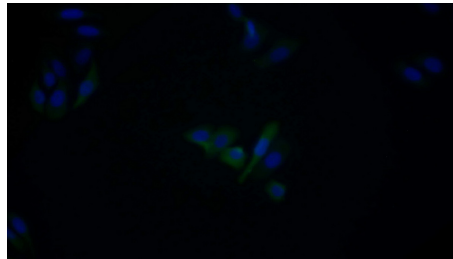
DAB staining on IHC-P;
 Samples: Human Cerebrum Tissue;
 Primary Ab: 30µg/ml Mouse Anti-Human GAPDH Antibody
 Second Ab: 2µg/mL HRP-Linked Caprine Anti-Mouse IgG Polyclonal

Antibody
(Catalog: SAA544Mu19)



Western Blot Sample: Lane1: 293T cell lysate; Lane2: Mouse Liver lysate;
Primary Ab: 5?g/ml Mouse Anti-Human GAPDH Antibody
Second Ab: 0.2?g/mL HRP-Linked Rabbit Anti-Mouse IgG Polyclonal Antibody
(Catalog: SAA544Mu19)

Caprine Anti-Mouse IgG Polyclonal Antibody
(Catalog: SAA544Mu19)



FITC staining on IF;

Samples: Human HepG2 cell;
Primary Ab: 20?g/ml Mouse Anti-Human GAPDH Antibody
Second Ab: 3?g/ml FITC-Linked Caprine Anti-Mouse IgG Polyclonal Antibody
(Catalog: SAA544Mu18)

Antibody
(Catalog: SAA544Mu19)

[**IMPORTANT NOTE**]

The kit is designed for research use only, we will not be responsible for any issue if the kit was used in clinical diagnostic or any other procedures.