



**SPA239Mi01 10 $\mu$ g**

**Alpha-Melanocyte Stimulating Hormone (aMSH)**

**Organism Species: Homo sapiens (Human)**

**Mus musculus (Mouse)**

**Rattus norvegicus (Rat)**

**Bos taurus; Bovine (Cattle)**

**Sus scrofa; Porcine (Pig)**

**Ovis aries; Ovine (Sheep)**

**Cavia (Guinea pig)**

**Oryctolagus cuniculus (Rabbit)**

***Instruction manual***

FOR IN VITRO USE AND RESEARCH USE ONLY  
NOT FOR USE IN CLINICAL DIAGNOSTIC PROCEDURES

---

12th Edition (Revised in Aug, 2016)

## **[ PROPERTIES ]**

**Source:** Synthetic Peptide

**Peptide Residues:** Ser138-Val150

**Purity:** >90%

**Traits:** Freeze-dried powder.

**Buffer formulation:** PBS, pH7.4.

**Applications:** Immunogen; Blocking Peptide.

**Note:** 100% cross-reactivity of aMSH was observed among human, mouse, rat, bovine, porcine, ovine, cavia and rabbit.

## **[ USAGE ]**

Reconstitute in PBS (pH7.4) to a concentration of 0.1-1.0 mg/mL. Do not vortex.

## **[ STORAGE AND STABILITY ]**

**Storage:** Avoid repeated freeze/thaw cycles.

Store at 2-8°C for one month.

Aliquot and store at -80°C for 12 months.

**Stability Test:** The thermal stability is described by the loss rate. The loss rate was determined by accelerated thermal degradation test, that is, incubate the protein at 37°C for 48h, and no obvious degradation and precipitation were observed. The loss rate is less than 5% within the expiration date under appropriate storage condition.

## **[ SEQUENCE ]**

**SYS MEHFRWGKPV**

[ IDENTIFICATION ]

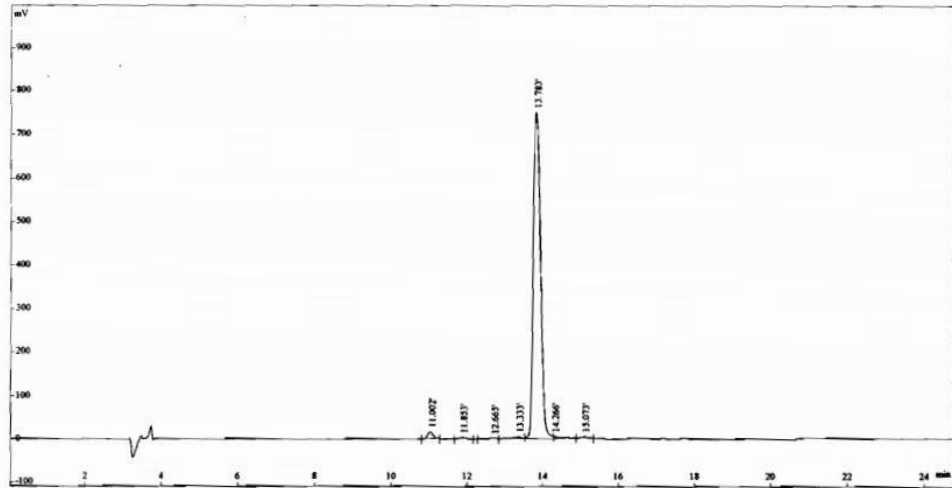


Figure 1. HPLC of the Original Peptide

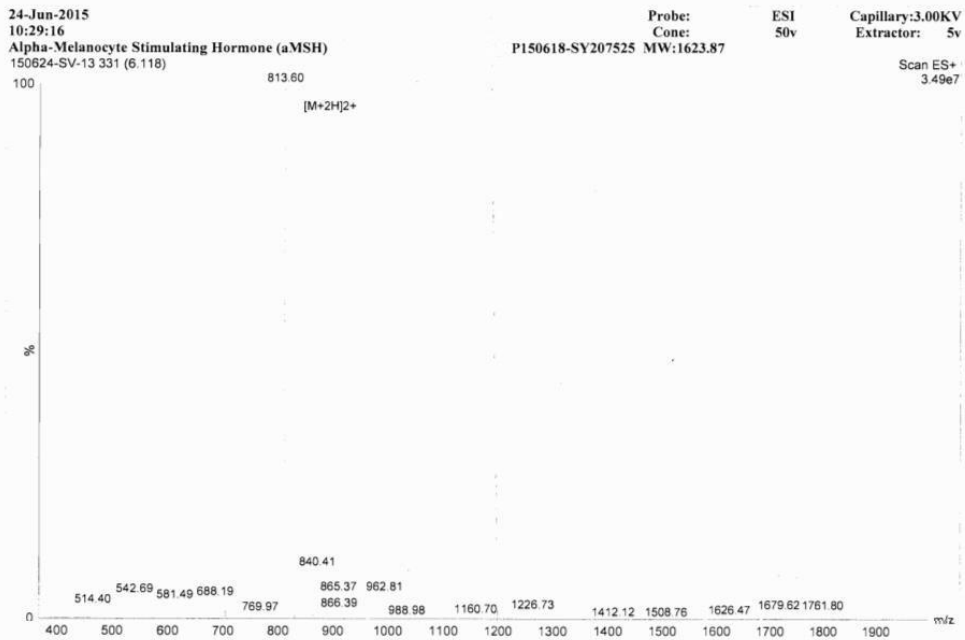


Figure 2. MASS Spectrometry of the Original Peptide